



New England School Development Council

SAU #41

Brookline Public Schools

Brookline, NH

School Year 2025-26 Enrollment Projection Report

Copyright, New England School Development Council, 2025



Table of Contents

Section	Page
Enrollment Summary.....	1
Historical Enrollment Table.....	2
Historical Enrollment Graph.....	3
Projected Enrollment Table.....	4
Projected Enrollment Graph.....	5
Historical & Projected Enrollment Graph.....	6
Historical & Projected Enrollment in Grade Combinations Line Graph.....	7
Historical & Projected Enrollment in Grade Combinations Stacked Column Graph.....	8
Birth to Kindergarten Relationship Graph.....	9
Additional Information	10
New England PK-12 Enrollment Trends.....	11
Projection Methodology and Reliability	12



Brookline, NH Enrollment Summary

NESDEC is pleased to send you this report displaying the past, present, and projected enrollments for your District. It is important to update enrollment projections every year to identify changes in enrollment patterns. Ten-year projections are designed to provide your District with yearly, up-to-date enrollment information that can be used by boards and administrators for effective planning and allocation of resources. We received the enrollment data from the District, and we assume that the method of collecting this data has been consistent from year to year.

Birth data informs Kindergarten enrollment. Each year, NESDEC secures birth data from State sources, providing a snapshot in time as to actual and provisional births as reported by the State, and then uses this birth data to predict Kindergarten enrollments. We only use annual birth data to assure consistency in reporting from year to year. Estimated births, which are an average of the previous five years of birth data, are based on this same snapshot. NESDEC acknowledges the variability of the provisional and the estimated birth data, and notes that the projected Kindergarten enrollments may serve as a guide to future planning.

Enrollment projections are more reliable in Years #1-3 in the future. Projections four to ten years out may serve as a guide to future enrollments and are useful for planning purposes. For more information, please refer to the Projection Methodology and Reliability section of this document.

The NESDEC enrollment projection fell within 31 students of the K-12 total, 1,075 students projected vs. 1,044 enrolled. One variance of 12 students occurred at Kindergarten, 87 projected vs. 75 enrolled. Ratios have been adjusted. Note: Ungraded students are not included in K-12 total.

Births increased by 14 from a previous ten-year average of 45 to a projected average of 59. In most districts, Grades 1-8 are very stable in enrollments. However, there have been increases in 6 of the 8 most recent years, leading to a net increase averaging 14 students per year.

Over the next three years, Grades K-3 enrollments are projected to increase by 77 students, Grades 4-6 enrollments are projected to decrease by 44 students, Grades 7-8 enrollments are projected to increase by 6 students, and Grades 9-12 enrollments are projected to increase by 5 students, as students move through the grades.



Historical Enrollment

School District: Brookline, NH

11/3/2025

Historical Enrollment By Grade																			
Birth Year	Births*	School Year	PK	K	1	2	3	4	5	6	7	8	9	10	11	12	UNGR	K-12	PK-12
2010	43	2015-16	26	60	67	65	69	66	96	109	107	97	100	85	109	101		1131	1157
2011	38	2016-17	24	78	66	69	73	73	67	102	108	110	104	97	82	111		1140	1164
2012	43	2017-18	19	73	77	67	78	78	73	68	102	108	113	106	99	79		1121	1140
2013	36	2018-19	39	66	76	78	70	86	79	79	97	114	101	103	103	118		1170	1209
2014	49	2019-20	19	73	71	87	82	76	90	80	88	75	102	107	113	105		1149	1168
2015	50	2020-21	15	72	73	72	90	80	80	90	79	87	74	104	107	109		1117	1132
2016	57	2021-22	12	81	81	82	84	87	80	80	92	76	88	79	97	112		1119	1131
2017	36	2022-23	20	53	86	87	80	78	91	85	83	89	77	83	80	118		1090	1110
2018	41	2023-24	20	73	59	89	90	80	81	90	88	88	89	79	83	89		1078	1098
2019	57	2024-25	20	68	75	56	90	87	79	83	91	89	84	86	80	90		1058	1078
2020	59	2025-26	23	75	71	77	58	91	83	78	82	91	87	80	87	84		1044	1067

*Birth data provided by Public Health Vital Records Departments in each state.

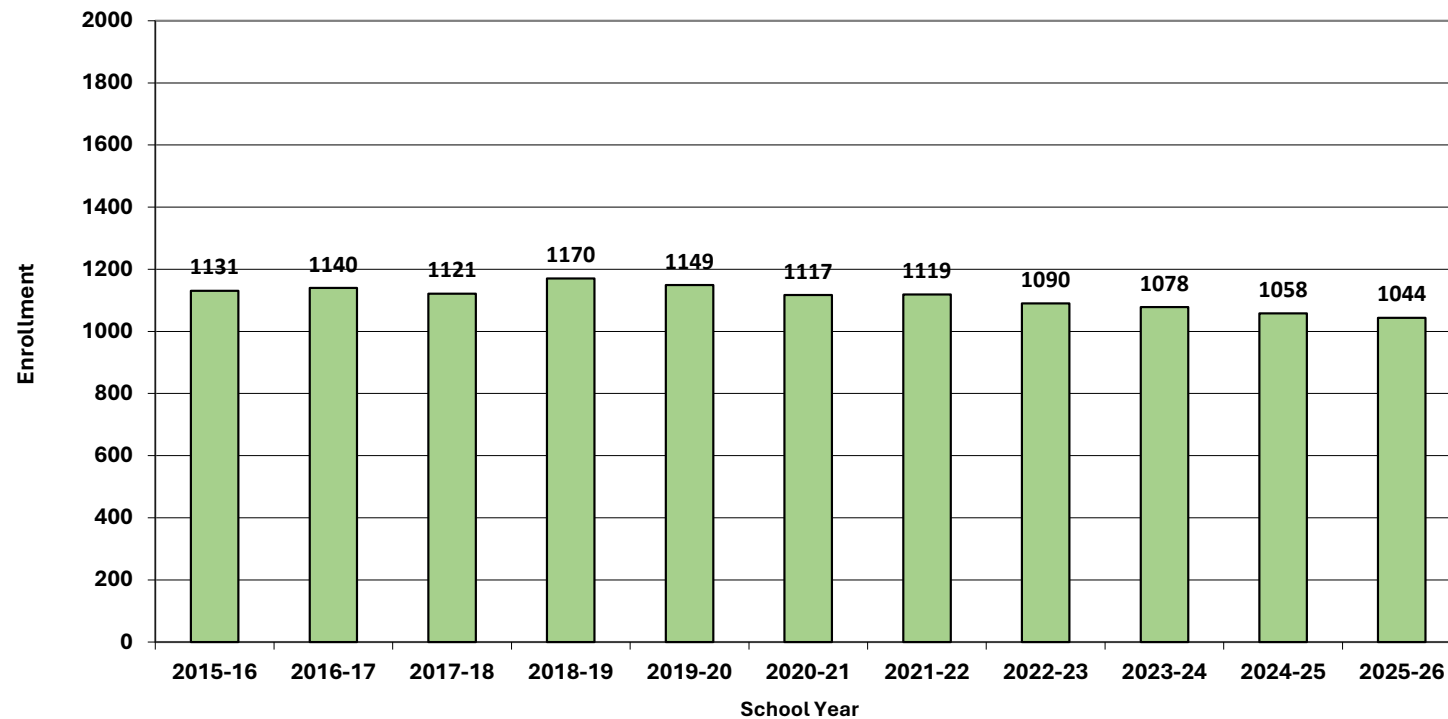
** < 10 Not reported, to protect subgroups with fewer than 10 students.

Historical Enrollment in Grade Combinations										
School Year	PK-6	K-6	K-3	4-6	6-8	K-8	PK-8	7-8	7-12	9-12
2015-16	558	532	261	271	313	736	762	204	599	395
2016-17	552	528	286	242	320	746	770	218	612	394
2017-18	533	514	295	219	278	724	743	210	607	397
2018-19	573	534	290	244	290	745	784	211	636	425
2019-20	578	559	313	246	243	722	741	163	590	427
2020-21	572	557	307	250	256	723	738	166	560	394
2021-22	587	575	328	247	248	743	755	168	544	376
2022-23	580	560	306	254	257	732	752	172	530	358
2023-24	582	562	311	251	266	738	758	176	516	340
2024-25	558	538	289	249	263	718	738	180	520	340
2025-26	556	533	281	252	251	706	729	173	511	338

Historical Percentage Changes			
School Year	K-12	Diff.	%
2015-16	1131		
2016-17	1140	9	0.8%
2017-18	1121	-19	-1.7%
2018-19	1170	49	4.4%
2019-20	1149	-21	-1.8%
2020-21	1117	-32	-2.8%
2021-22	1119	2	0.2%
2022-23	1090	-29	-2.6%
2023-24	1078	-12	-1.1%
2024-25	1058	-20	-1.9%
2025-26	1044	-14	-1.3%
Change		-87	-7.7%



Grades K-12 Historical Enrollment





Projected Enrollment

School District: Brookline, NH

11/3/2025

Enrollment Projections By Grade*																				
Birth Year	Births*		School Year	PK	K	1	2	3	4	5	6	7	8	9	10	11	12	UNGR	K-12	PK-12
2020	59		2025-26	23	75	71	77	58	91	83	78	82	91	87	80	87	84		1044	1067
2021	59		2026-27	23	84	80	73	79	57	92	83	79	84	90	85	81	94		1061	1084
2022	61		2027-28	23	87	89	82	75	77	92	84	81	83	88	88	86	88		1069	1092
2023	64		2028-29	23	91	92	91	84	73	78	57	93	86	80	81	89	93		1088	1111
2024	52	(prov.)	2029-30	24	74	97	94	93	82	73	78	58	95	85	79	82	96		1086	1110
2025	59	(est.)	2030-31	24	84	79	99	97	91	83	73	79	59	94	83	80	89		1090	1114
2026	59	(est.)	2031-32	24	84	89	81	102	95	92	83	74	81	58	92	84	87		1102	1126
2027	59	(est.)	2032-33	25	84	89	91	83	100	96	92	84	75	80	57	93	91		1115	1140
2028	59	(est.)	2033-34	25	84	89	91	93	81	101	96	93	86	74	79	57	101		1125	1150
2029	58	(est.)	2034-35	25	82	89	91	93	91	82	101	97	95	85	73	80	62		1121	1146
2030	59	(est.)	2035-36	25	84	87	91	93	91	92	82	102	99	94	83	74	87		1159	1184

Note: Ungraded students (UNGR) often are high school students whose anticipated years of graduation are unknown, or students with special needs - UNGR not included in Grade Combinations for 7-12, 9-12, etc.

Based on an estimate of births

Based on children already born

Based on students already enrolled

*Birth data provided by Public Health Vital Records Departments in each state.

** < 10 Not reported, to protect subgroups with fewer than 10 students.

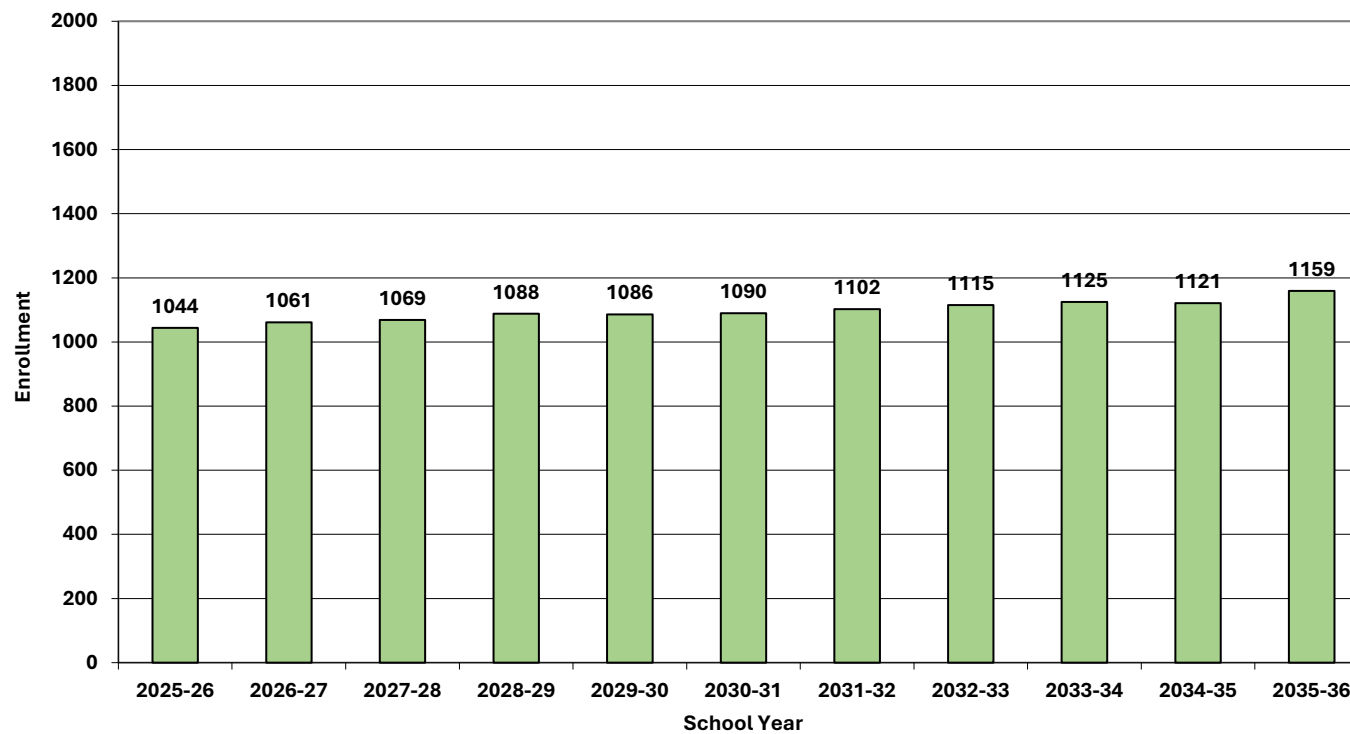
Projected Enrollment in Grade Combinations*										
School Year	PK-6	K-6	K-3	4-6	6-8	K-8	PK-8	7-8	7-12	9-12
2025-26	556	533	281	252	251	706	729	173	511	338
2026-27	571	548	316	232	246	711	734	163	513	350
2027-28	582	559	333	226	257	724	747	165	510	345
2028-29	589	566	358	208	236	745	768	179	522	343
2029-30	615	591	358	233	231	744	768	153	495	342
2030-31	630	606	359	247	211	744	768	138	484	346
2031-32	650	626	356	270	238	781	805	155	476	321
2032-33	660	635	347	288	251	794	819	159	480	321
2033-34	660	635	357	278	275	814	839	179	490	311
2034-35	654	629	355	274	293	821	846	192	492	300
2035-36	645	620	355	265	283	821	846	201	539	338

Projected Percentage Changes			
School Year	K-12	Diff.	%
2025-26	1044		
2026-27	1061	17	1.6%
2027-28	1069	8	0.8%
2028-29	1088	19	1.8%
2029-30	1086	-2	-0.2%
2030-31	1090	4	0.4%
2031-32	1102	12	1.1%
2032-33	1115	13	1.2%
2033-34	1125	10	0.9%
2034-35	1121	-4	-0.4%
2035-36	1159	38	3.4%
Change	115		11.0%

*Projections should be updated annually to reflect changes in in/out-migration of families, births, and similar factors.

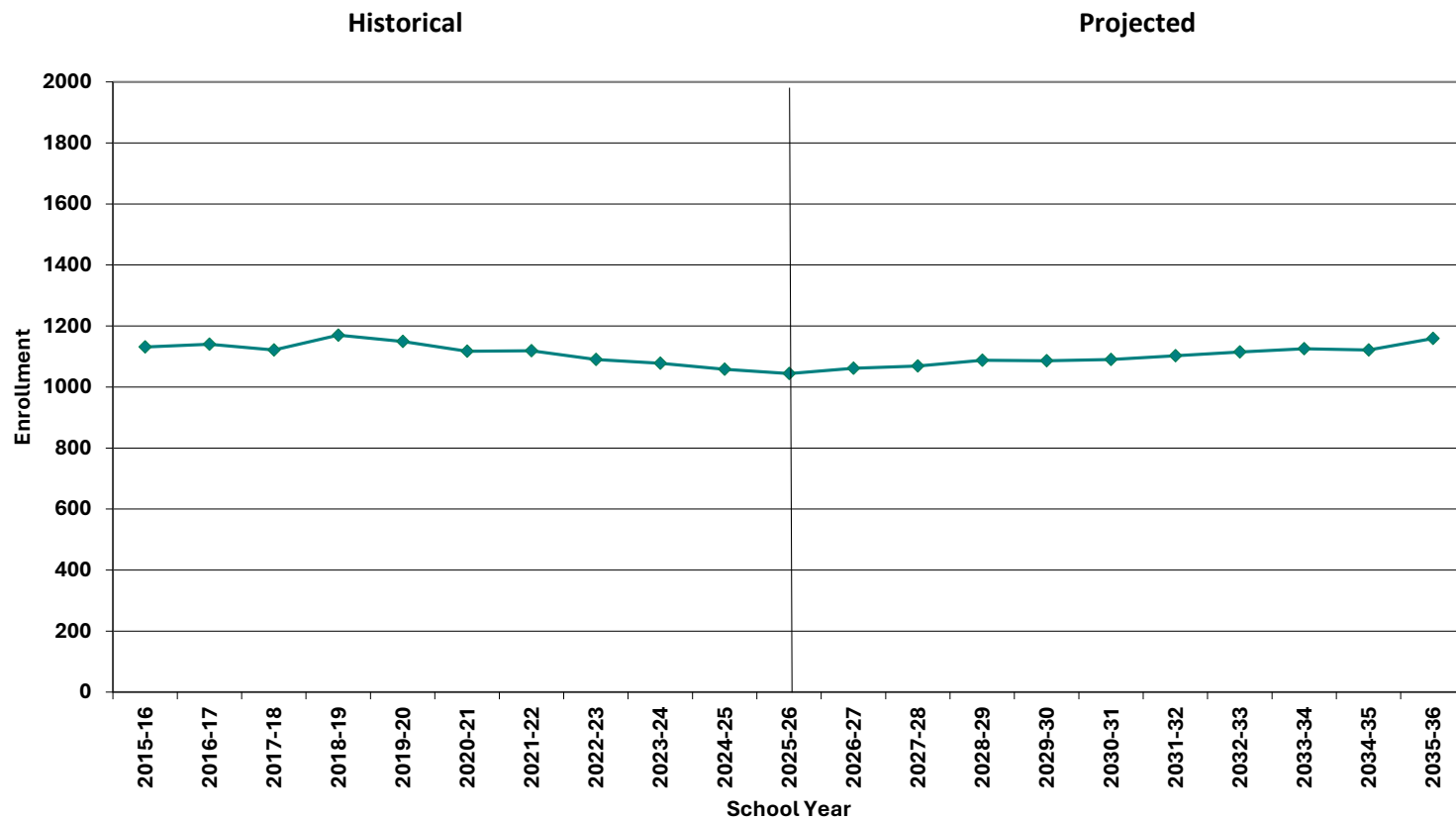


Grades K-12 Projected Enrollment



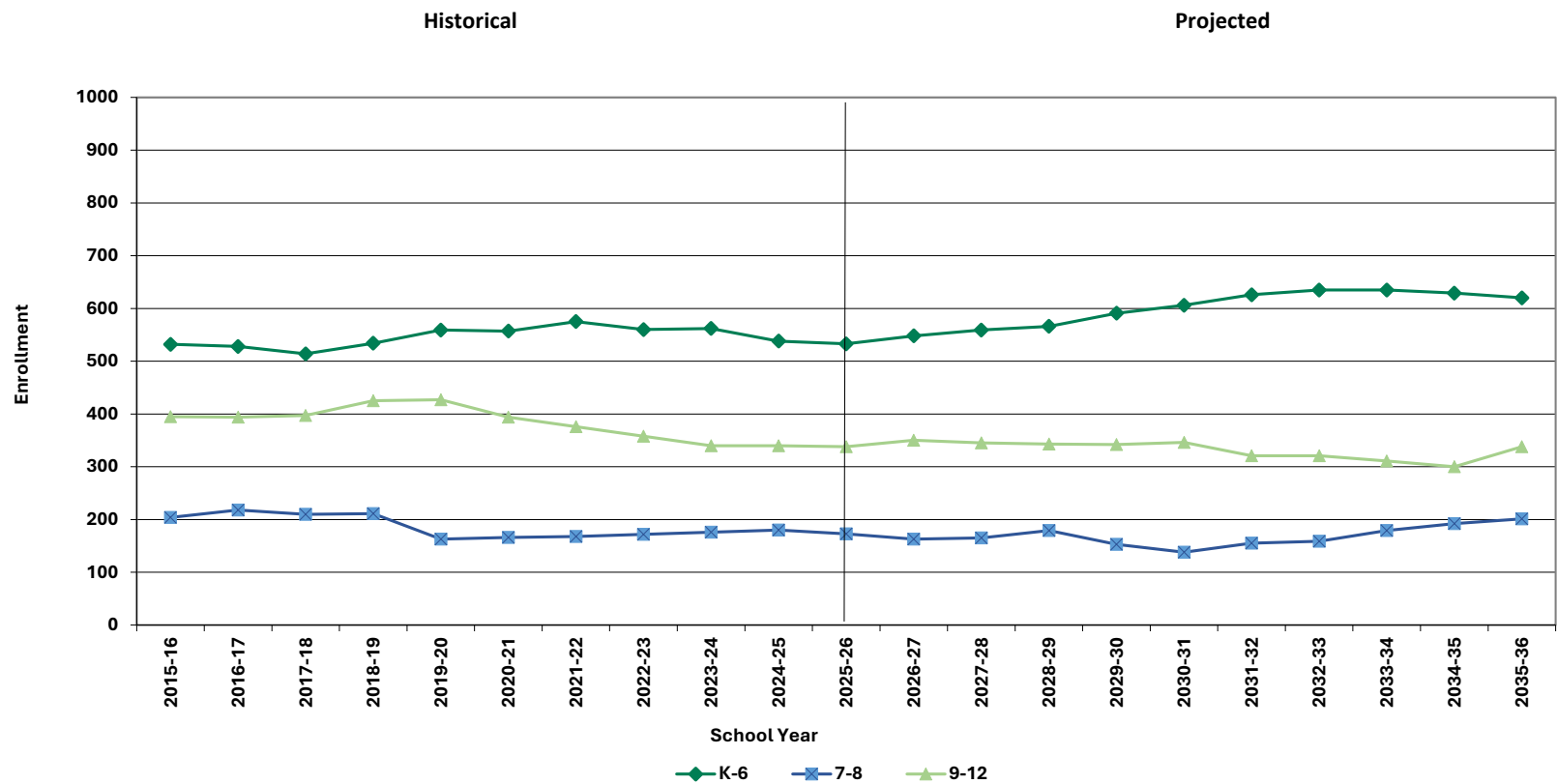


Grades K-12 Historical & Projected Enrollment



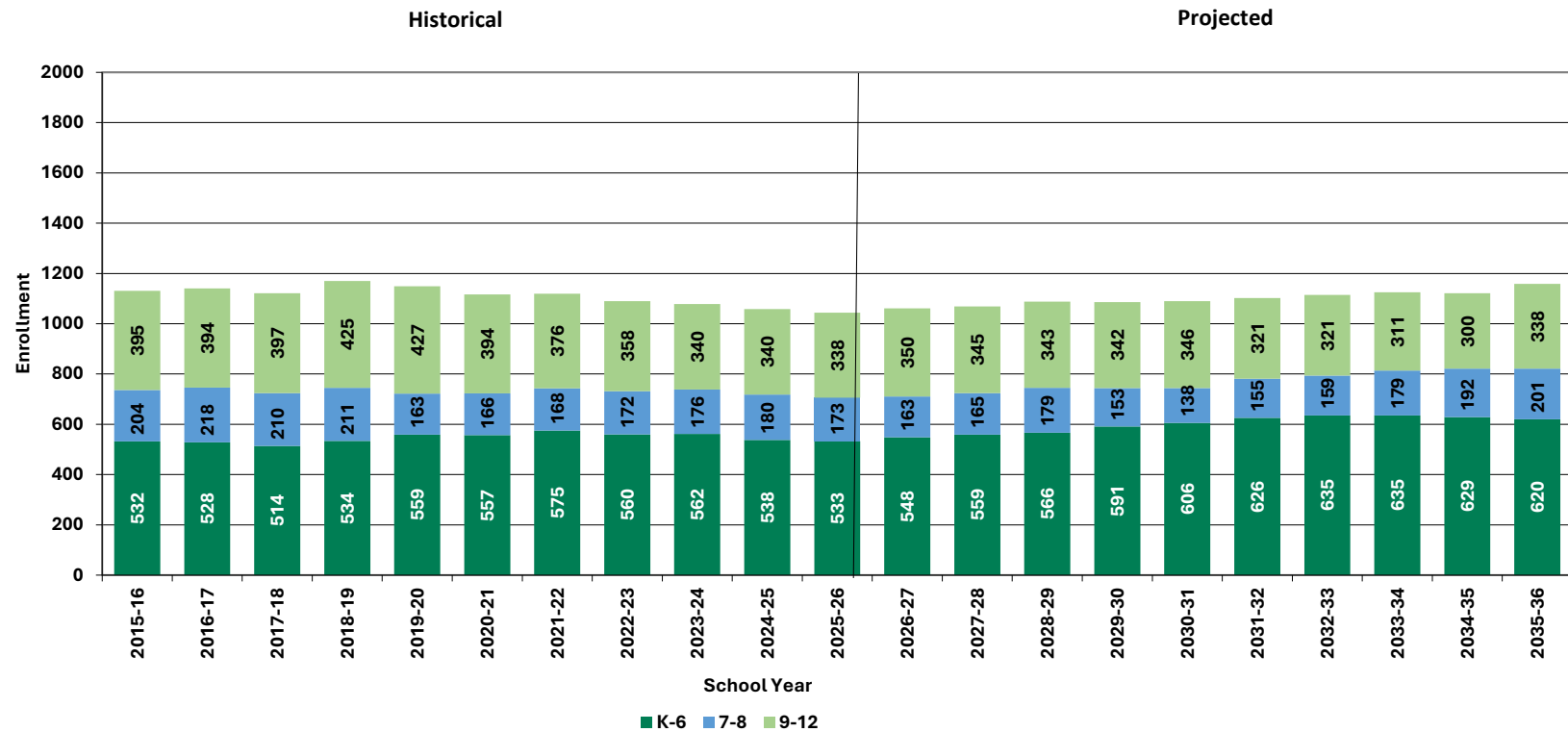


Historical & Projected Enrollment in Grade Combinations



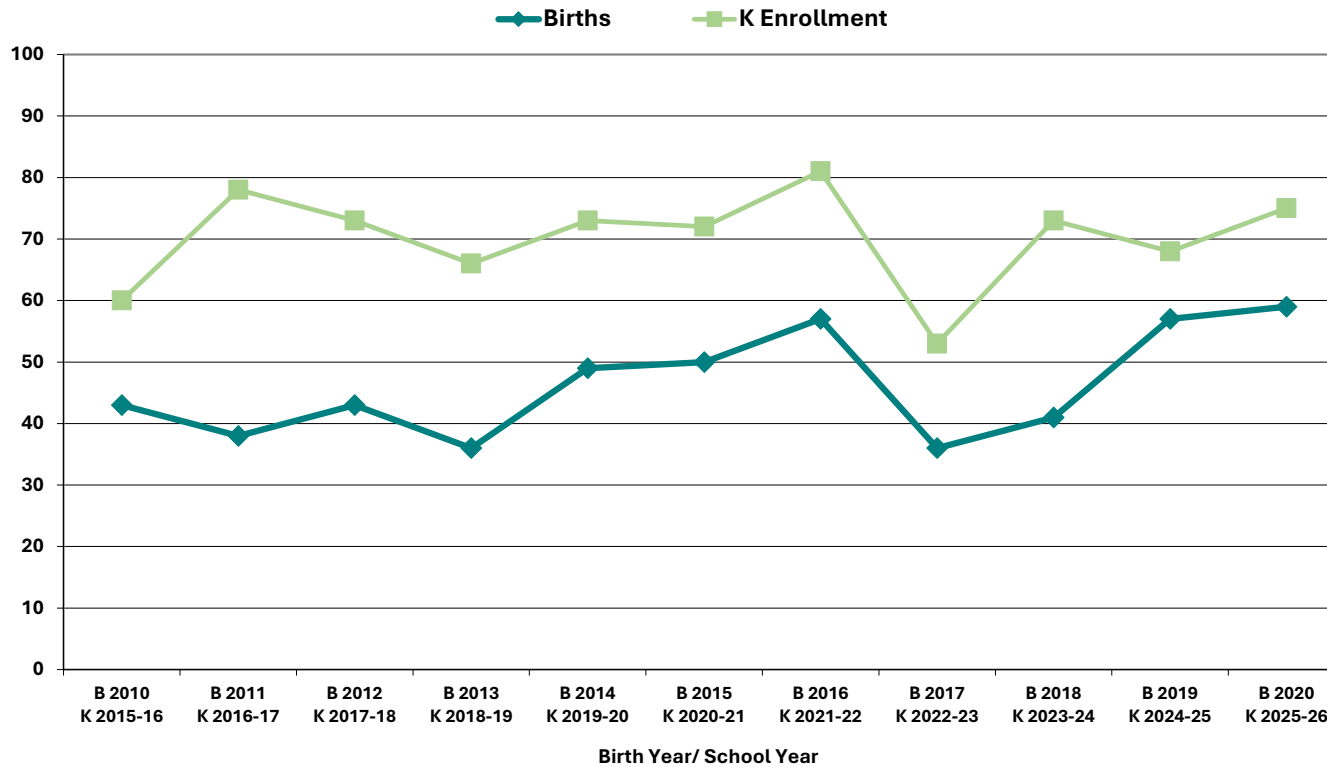


Historical & Projected Enrollment in Grade Combinations





Birth to Kindergarten Relationship



	B 2010 K 2015-16	B 2011 K 2016-17	B 2012 K 2017-18	B 2013 K 2018-19	B 2014 K 2019-20	B 2015 K 2020-21	B 2016 K 2021-22	B 2017 K 2022-23	B 2018 K 2023-24	B 2019 K 2024-25	B 2020 K 2025-26
Births	43	38	43	36	49	50	57	36	41	57	59
Kindergarten	60	78	73	66	73	72	81	53	73	68	75



Additional Information

School Year	9-12 CTE	K-12 Non-Public	K-12 Choice-In	K-12 Choice-Out	K-12 Out District SPED	K-12 Homeschool
2021-22	n/a	n/a	< 10 **	0	< 10 **	18
2022-23	n/a	n/a	0	0	0	0
2023-24	n/a	n/a	0	0	0	0
2024-25	n/a	n/a	0	0	< 10 **	18
2025-26	n/a	n/a	n/a	n/a	< 10 **	< 10 **

* Data provided by District.

"n/a" signifies that information was not provided by District.

** < 10 Not reported, to protect subgroups with fewer than 10 students.



New England's PK-12 Enrollments Trends

State	Fall 2013 PK - 12	Fall 2019 PK - 12	Fall 2022 PK - 12	Fall 2023 PK - 12	% Change 2013 - 23	% Change 2019-23	% Change 2022-23
USA	50,044,522	50,796,445	49,618,464	49,516,361	-1.1%	-2.5%	-0.2%
CT	546,200	523,690	513,513	512,652	-6.1%	-2.1%	-0.2%
ME	183,995	180,291	173,853	172,545	-6.2%	-4.3%	-0.8%
MA	955,739	959,394	923,349	914,958	-4.3%	-4.6%	-0.9%
NH	186,310	177,351	168,909	166,594	-10.6%	-6.1%	-1.4%
RI	142,008	143,557	137,449	136,154	-4.1%	-5.2%	-0.9%
VT	88,690	86,759	83,654	82,455	-7.0%	-5.0%	-1.4%

Source: U.S. Department of Education, National Center for Education Statistics, Enrollment in public elementary and secondary schools, by region, state, and jurisdiction: Selected years, fall 1990 through fall 2023, Table 203.20, Report Generated Oct. 2024, NESDEC 5.28.25

Although most New England Districts are seeing a decline in the number of births, NESDEC's experience indicates that the impact on enrollment varies from District to District. Almost half of New England Districts have been growing in PK-12 enrollment, and a similar number are declining (often in rural areas), with the other Districts remaining stable.



Projection Methodology and Reliability

PROJECTION METHODOLOGY

Cohort component (survival) technique is a frequently used method of preparing enrollment projections. NESDEC uses this method, but modifies it in order to move away from projections that are wholly computer- or formula-driven. Such modification permits the incorporation of important, current district-specific demographic information into the generation of enrollment projections (such as in/out-migration of students, resident births, etc.). Percentages are calculated from the historical enrollment data to determine a reliable percentage of increase or decrease in enrollment between any two grades. For example, if 100 students enrolled in Grade 1 in 2024-25 increased to 104 students in Grade 2 in 2025-26, the percentage of survival would be 104%, or a ratio of 1.04. Ratios are calculated between each pair of grades or years in school over several recent years.

After study and analysis of the historical ratios, and based upon a reasonable set of assumptions regarding births, migration rates, retention rates, etc., ratios most indicative of future growth patterns are determined for each pair of grades. The ratios thus selected are applied to the present enrollment statistics to project into future years. The ratios are the key factors in the reliability of the projections, assuming validity of the data at the starting point.

RELIABILITY OF ENROLLMENT PROJECTIONS

Projections can serve as useful guides to school administrators for educational planning. Enrollment projections are more reliable in Years #1-3 in the future and less reliable in the "out-years." Projections four to ten years out may serve as a guide to future enrollments and are useful for planning purposes, but they should be viewed as subject to change given the likelihood of potential shifts in underlying assumptions/trends, such as student migration, births as they relate to Kindergarten enrollment, and other factors.

Projections that are based upon **the children who already are in the district** (the current K-12 population only) will be the most reliable. The second level of reliability will be for those children already **born into the community but not yet old enough to be in school**. The least reliable category is the group for which an estimate must be made **to predict the number of births**, thereby adding additional uncertainty. See these three multi-colored groupings on the "Projected Enrollment" tab.

Annual updates allow for early identification of recent changes in historical trends. When the actual enrollment in a grade is significantly different (higher or lower) from the projected number, it is important (yet difficult) to determine whether this is a one-year aberration or whether a new trend may have begun. **In light of this possibility, NESDEC urges all school districts to have updated enrollment projections developed by NESDEC each October.** This service is available at no cost to affiliated school districts.